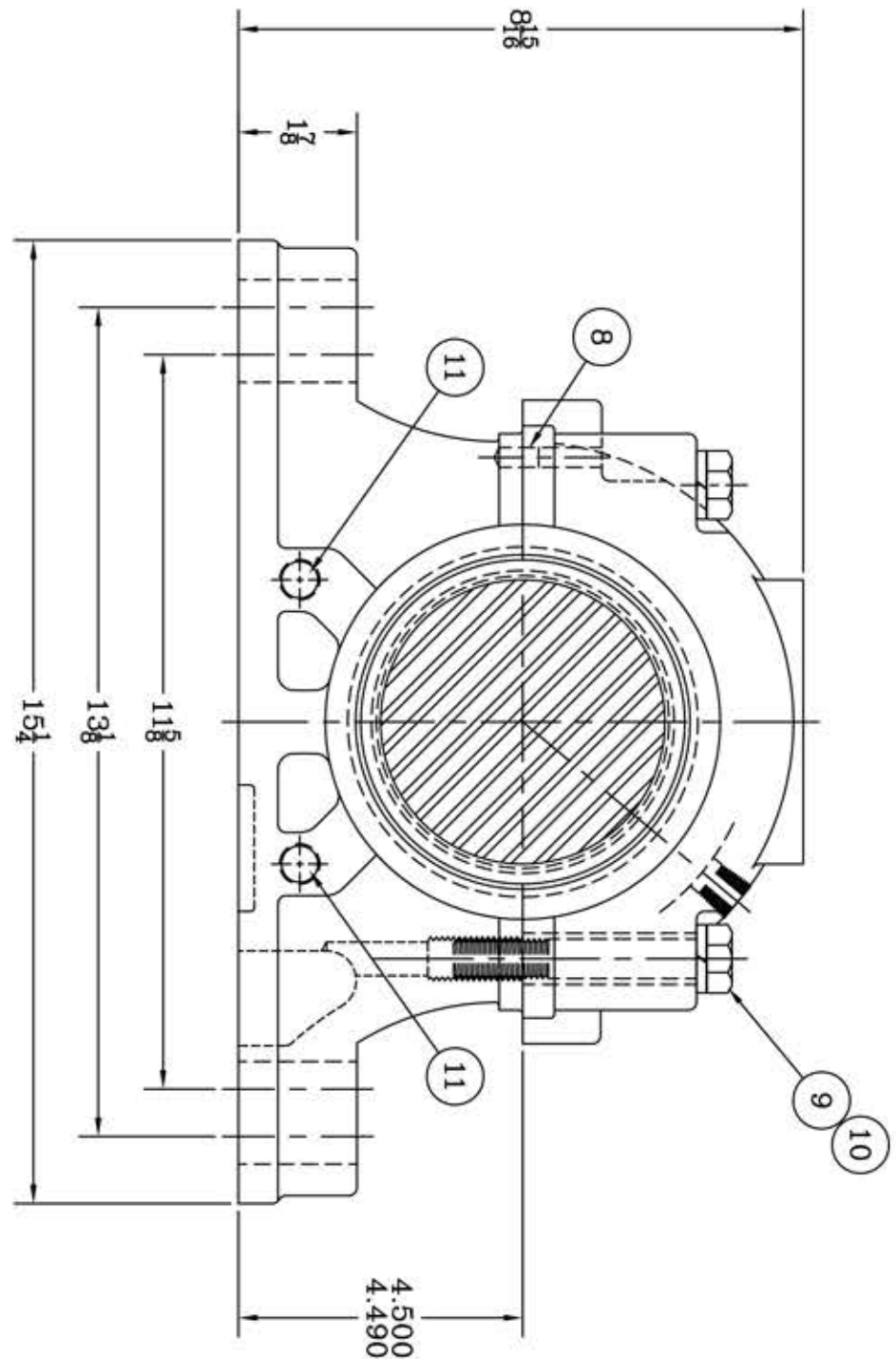
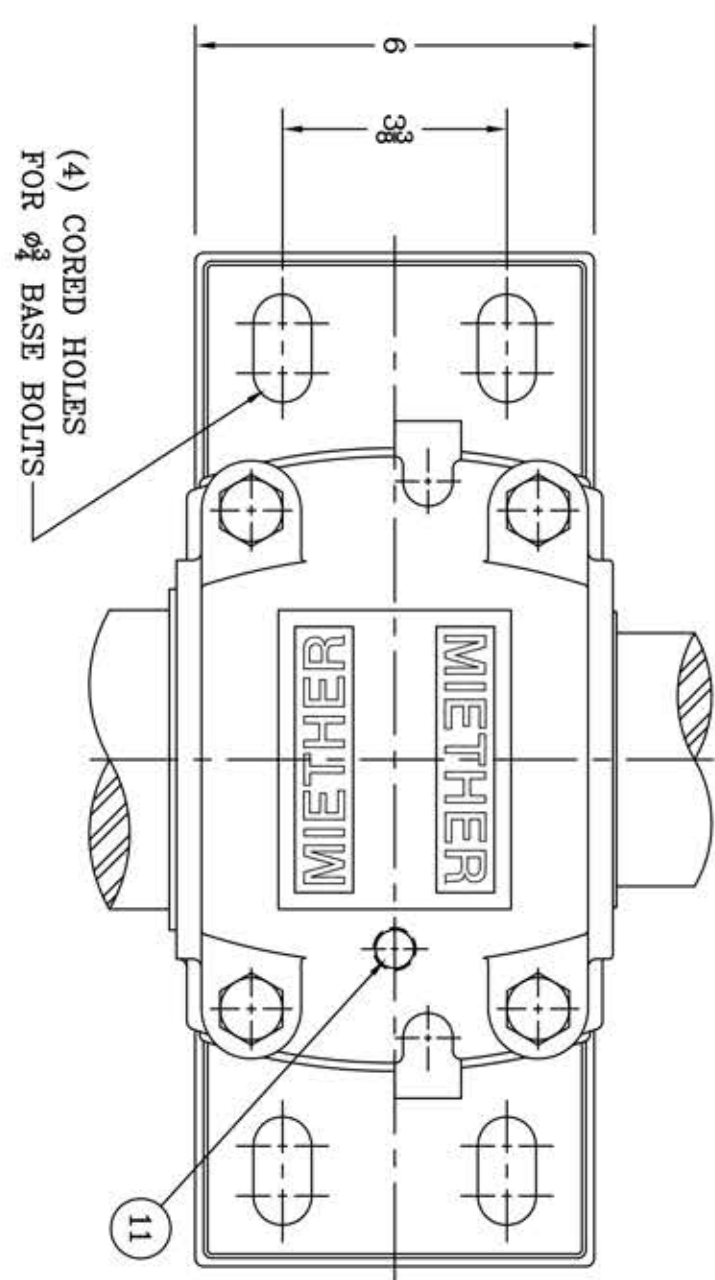
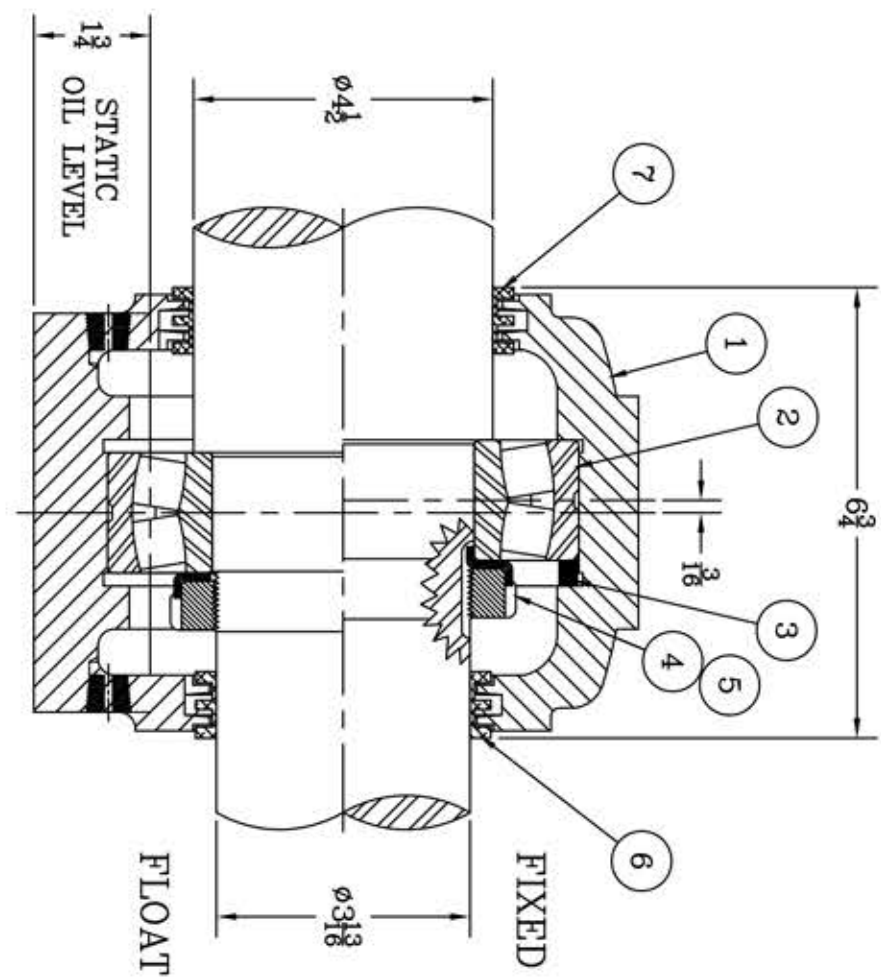


This drawing is the sole property of Miether Bearing Products and contains confidential and proprietary information. It is being provided to you for your use and may not be disclosed to any third party or used for any other purpose without Miether's prior written consent. The [materials] must be returned to the Company upon its demand. Your acceptance of these materials constitutes your acceptance of the foregoing terms.

C-35251



ITEM	DESCRIPTION	DETAIL	REQUIRED
1	HOUSING SDAFPD 220	C-	1 1
2	SPHERICAL ROLLER BEARING 22220/W-33		1 1
3	STABILIZING RING SR-20-17	A-10602	1 0
4	LOCKNUT AN-20	B-10785	1 1
5	LOCKWASHER W-20	00244	1 1
6	TRIPLE SEAL RING LER-106	A-10578	1 1
7	TRIPLE SEAL RING LER-118	A-10498	1 1
8	DOWEL $\phi 1/8$ x $1/8$ LONG		2 2
9	CAP BOLT HEX HEAD GR.5 $1/8$ -11 NC x 4" LONG		4 4
10	LOCKWASHER $1/8$ SPLIT MED.		4 4
11	PIPE PLUG $3/8$ -18-NPT		3 3



REVISIONS

SYMBOL	DESCRIPTION
C	16
D	32
E	63
F	125
G	250
J	500
K	1000

TOLERANCE: UNLESS OTHERWISE SPECIFIED

FRACTIONS  $\pm 1/32$ " ANGLES  $\pm 0^\circ 30'$

DECIMALS  $\pm .005$  WELD  $\pm 1/16$ "

CASTING  $\pm 1/16$ "

A.I.S.I. STANDARD FINISHES

AN ALCO INDUSTRIES COMPANY  
BEARING PRODUCTS  
ODESSA, TX. USA

SDAFD 22220	04-08 x 03-13
ASSEMBLY DRAWING	
SCALE HALF	ASSEMBLY NO.
DRAWN PCF	
DATE 1-7-13	DRAWING NO.
CHK:	C-35251